

**LINO TAGLIAPIETRA**

**MAESTRO**

**MARCH 19-APRIL 17, 2022**

**AUSTIN ART  
PROJECTS**



**NASSAU**  
2020  
17 x 14 x 6.25 inches



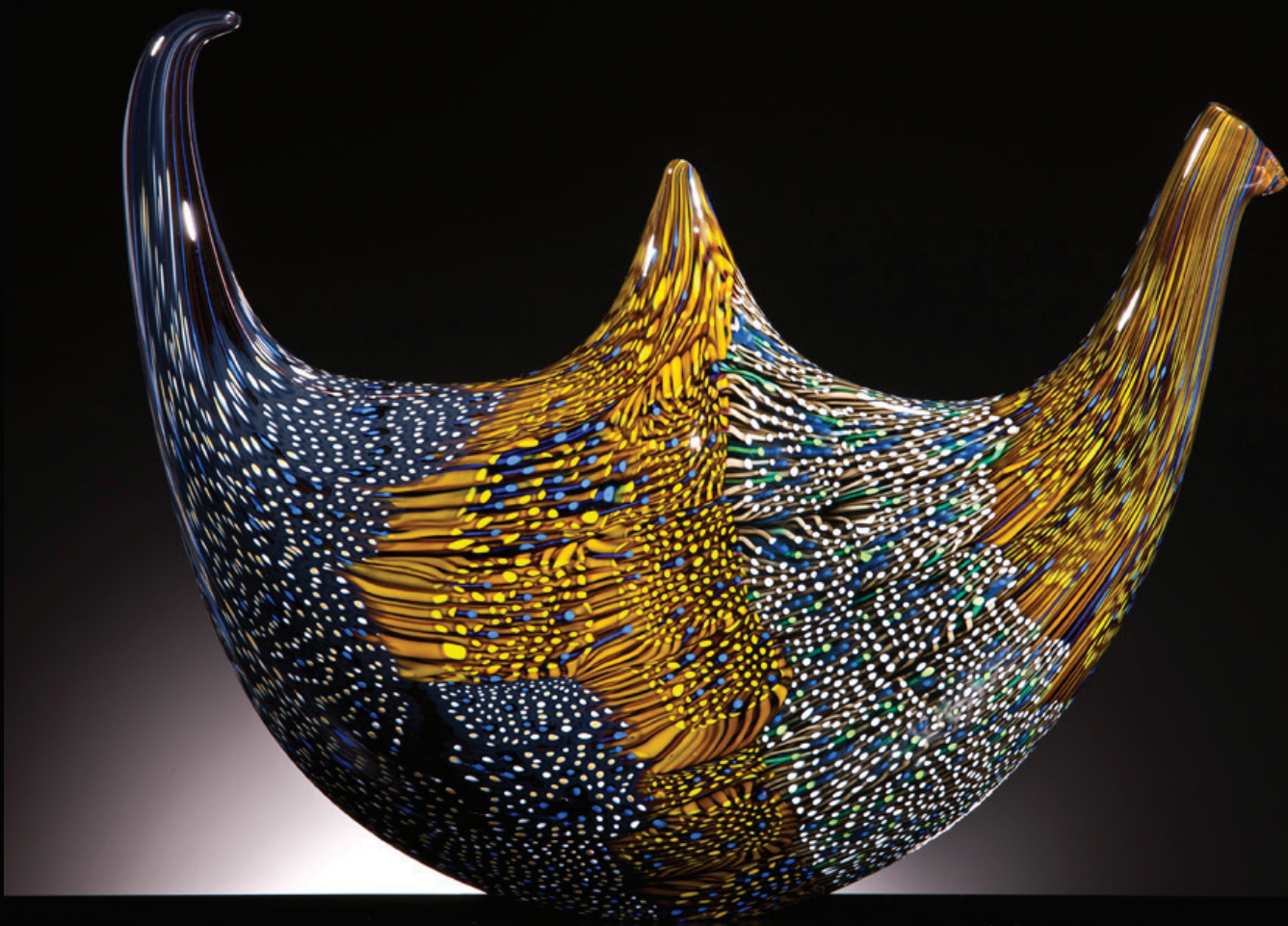
**NASSAU (VIEW 2)**  
2020  
17 x 14 x 6.25 inches



**THILA**  
2019  
17.75 x 7 x 7 inches



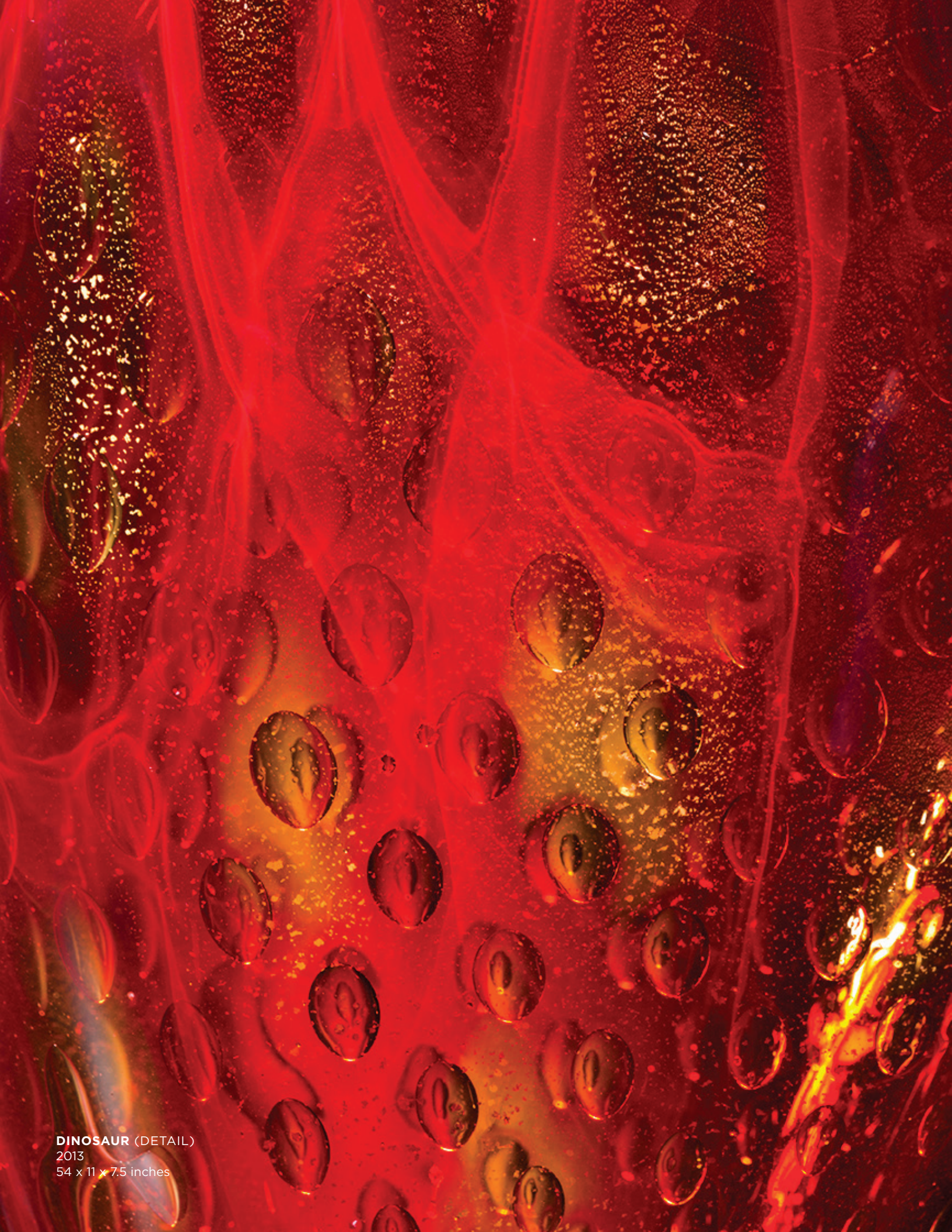
**BATMAN**  
2012  
9 x 11.5 x 3.75 inches



**BATMAN (VIEW 2)**  
2012  
9 x 11.5 x 3.75 inches



**DINOSAUR**  
2013  
54 x 11 x 7.5 inches



**DINOSAUR (DETAIL)**  
2013  
54 x 11 x 7.5 inches





**ENDEAVOR**  
2013  
15 x 66.75 x 7.24 inches



**ENDEAVOR**  
2009  
8.5 x 60.5 x 7.75 inches



**ENDEAVOR**  
2005  
7 x 60.5 x 11 inches



**ENDEAVOR**

2000

4.75 x 37.25 x 5.75 inches



**ADVENTURINE INSTALLATION**

2019

17 x 18.25 x 6.5 inches



**ADVENTURINE INSTALLATION (VIEW 2)**

2019

17 x 18.25 x 6.5 inches



**CANTU**  
2007  
19 x 13 x 6.25 inches



**DURANGO**  
2016  
25 x 17 x 17 inches





**ANGEL TEAR**  
2005  
30.75 x 15.25 x 5 inches



**SABA**  
2010  
31.5 x 17.5 x 6.75 inches



**HOP**  
2019  
15.5 x 16 x 16 inches



**MASAI INSTALLATION**  
2019  
54 x 48 x 8.5 inches



**HANOI**  
2019  
14.5 x 11.25 x 6.5 inches



**BILBAO**  
2005  
23.5 x 8 x 4 inches



**SATURNO**  
2008  
5.25 x 17.25 x 17.25 inches



**MEDUSA**  
2006  
18.5 x 17.75 x 5.75 inches





**RIVERSTONE**  
2000  
16 x 15 x 7 inches

PLEASE CONTACT

AUSTIN ART  
PROJECTS

RING (760) 636-2834 WRITE [info@austinartprojects.com](mailto:info@austinartprojects.com)  
VISIT 44651 Village Court, Suite 142, Palm Desert 92260